



**AGENDA: TECHNICAL COORDINATING COMMITTEE
VIRTUAL ZOOM MEETING/NOVEMBER 12, 2024 @10 AM
JOIN ZOOM MEETING:**

[HTTPS://STANLYCOUNTYNC.ZOOM.US/J/92038366184](https://stanlycountync.zoom.us/j/92038366184)

1. Ethics Statement

Lee Snuggs, RRRPO Director

2. Public Comment

3. Amend/Adopt Agenda.....(ACTION NEEDED)

Lee Snuggs, RRRPO Director

4. Approval of Minutes from May & June(Special Called Mtg), 2024.....(ACTION NEEDED)

Lee Snuggs, RRRPO Director

5. Virtual TCC Meetings.....(ACTION NEEDED)

Lee Snuggs, RRRPO Director

- *After speaking with the County of Stanly Attorney, the TCC is not required to have in-person quorum/voting for agenda items.*
- *The TCC board is made up mostly of town/city/county managers, planners, clerks, etc., not elected officials.*
- *The TCC board is not voting on final approval of the agenda items, just the approval to recommend to the TAC.*

We barely made quorum(5/4) at our in-person meetings in March/May of this year. We haven't had a chairperson or vice-chairperson for 2024 because members were unable to commit to being at the physical meetings because of jurisdictional commitments/obligations.

- *TCC members will vote on moving to all virtual TCC meetings.*

6. Rocky River RPO - NCDOT Div.10 - SPOT 7.0 Division Projects Summary.....(ACTION NEEDED)

Lee Snuggs, RRRPO Director
Scott Miller, NCDOT

- Attached you will find the NCDOT Prioritization 7.0 Project Summaries for each SPOT ID project under review on the division level. The summaries provide the project description, location and the SPOT generated preliminary cost estimates. Please note the location of each project on the map shown by using RED, GREEN or intersection markers.
- SPOT 7.0 Division Tier Projects will need a vote on points distribution by November 29, 2024

7. Transit Providers

- a. ACTS.....Tanya Byrd
- b. SCUSA.....Steve Dutton
- c. UCT.....Theresa Torres/Bjorn Hansen

8. NCDOT Updates

- a. County Updates.....Division Staff
- b. Mobility & Safety Division.....Regional Traffic Staff
- c. Corridor Development Engineer..... Scott Miller
- d. Transportation Planning Division..... Emily Stupka

9. Old Business

10. New Business:

11. Adjourn

Next Meeting: *January 14, 2025*



NCDOT Prioritization 7.0 Project Summary

SPOT ID: A231125

Mode: Aviation

Status: Submitted

Airport Acreage Extension

Airport Name: VUJ - Stanly County Airport

Specific Improvement Type: 3000 - Other

Location: The project would entail the purchase of several parcels near the Northeast corner of campus which would ultimately extend that overall size of the property and allow for future growth.

Project Category: Division Needs

TIP #:

Fully Funded in Draft STIP? No

Cost to NCDOT: \$3,025,297

Description:

The parcels include several vacant properties and some occupied residential.

Division(s): Division 10

County(s): Stanly

MPO(s)/RPO(s): Rocky River RPO

Project Location



Sources: Esri, HERE, Garmin, USGS, Intermap, INCREMENT P, AIRCAN, Esri Japan, METI, Esri China (Hong Kong), Esri Korea, Esri (Thailand), NGCC, (c) OpenStreetMap contributors, and the GIS User Community



NCDOT Prioritization 7.0 Project Summary

SPOT ID: A231129

Mode: Aviation

Status: Submitted

Stanly County Hangar Construction

Airport Name: VUJ - Stanly County Airport

Specific Improvement Type: 1900 - Hangars

Location: Median area of campus near main Terminal Building.

Project Category: Division Needs

TIP #:

Fully Funded in Draft STIP? No

Cost to NCDOT: \$9,900,000

Description:

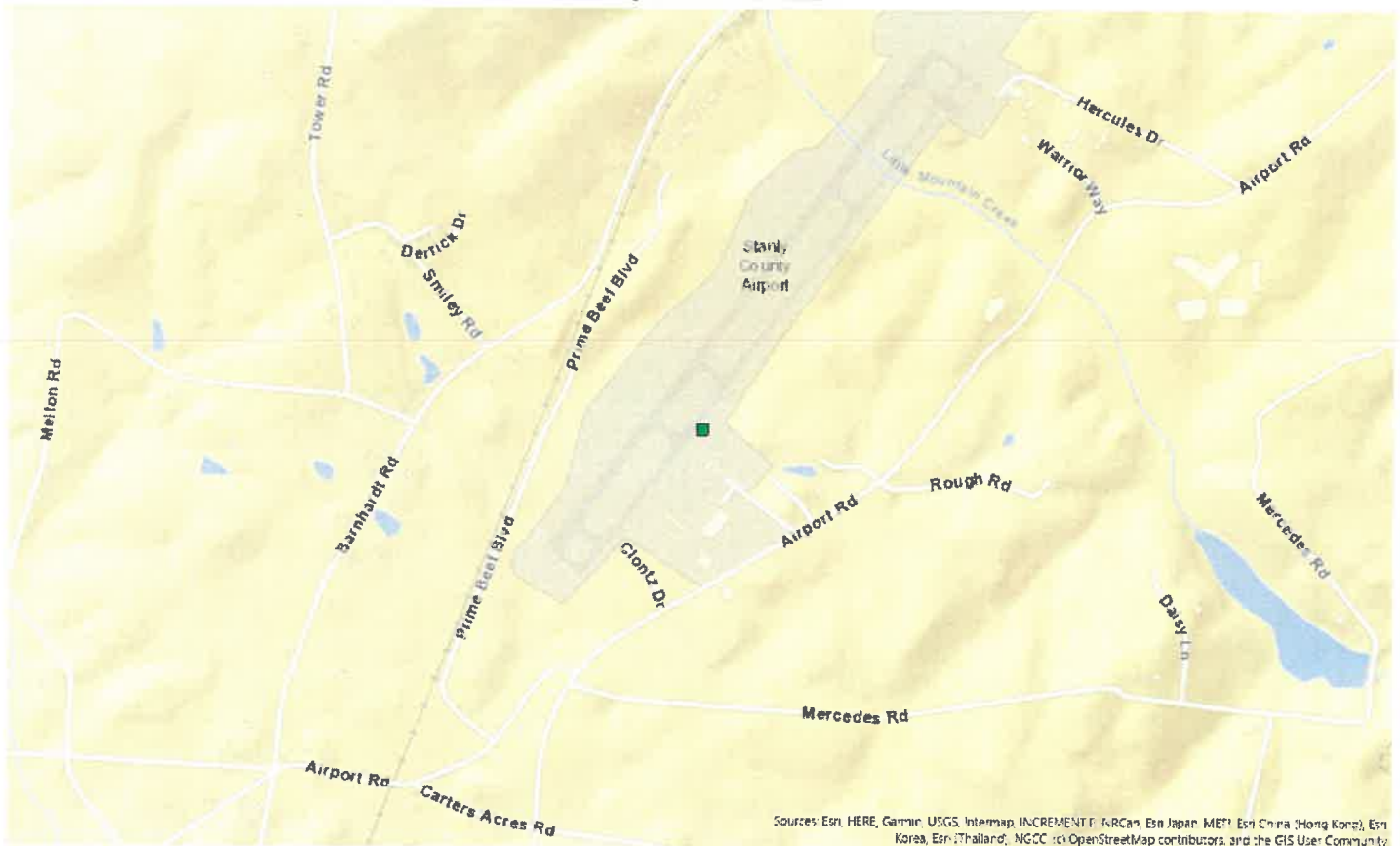
This project will allow for the planning, engineering & construction of several airport hangars to house & maintain aircraft on the existing grounds

Division(s): Division 10

County(s): Stanly

MPO(s)/RPO(s): Rocky River RPO

Project Location



Sources: Esri, HERE, Garmin, USGS, Intermap, INCREMENT P, NRCan, Esri Japan, METI, Esri China (Hong Kong), Esri Korea, Esri (Thailand), NGCC, (c) OpenStreetMap contributors, and the GIS User Community



NCDOT Prioritization 7.0 Project Summary

SPOT ID: A190517

Mode: Aviation

Status: Submitted

Airport Perimeter Fencing & Land Acquisition

Airport Name: AFP - Anson County Airport

Specific Improvement Type: 2100 - Perimeter Fencing

Location: Anson County Airport - 2980 Airport Road, Wadesboro, NC has an area along Aviation Rd approx 1,500-2,000' long which is currently open and not contained. This area is closest to several of the airport hangers and mechanical buildings.

Project Category: Division Needs

TIP #:

Fully Funded in Draft STIP? No

Cost to NCDOT: \$1,100,000

Description:

This project would fund the completion of perimeter fencing to AFP. The airport currently has only partial fencing and still needs approx 2000 lin.ft. to be fully contained. The prior section was funded through MPE, and project bids exceeded the available funding.

Division(s): Division 10

County(s): Anson

MPO(s)/RPO(s): Rocky River RPO

Project Location



Sources: Esri, HERE, Garmin, USGS, Intermap, INCREMENT P, NRCan, Esri Japan, METI, Esri China (Hong Kong), Esri Korea, Esri (Thailand), NGCC, (c) OpenStreetMap contributors, and the GIS User Community



NCDOT Prioritization 7.0 Project Summary

SPOT ID: A172262

Mode: Aviation

Status: Submitted

Land Acquisition

Airport Name: AFP - Anson County Airport

Specific Improvement Type: 3000 - Other

Location: Currently there is a privately owned strip of land between the existing grounds and Airport Road. Purchase of this parcel will make the grounds contiguous to Airport Road and allow for future growth.

Project Category: Division Needs

TIP #:

Fully Funded in Draft STIP? No

Cost to NCDOT: \$1,650,000

Description:

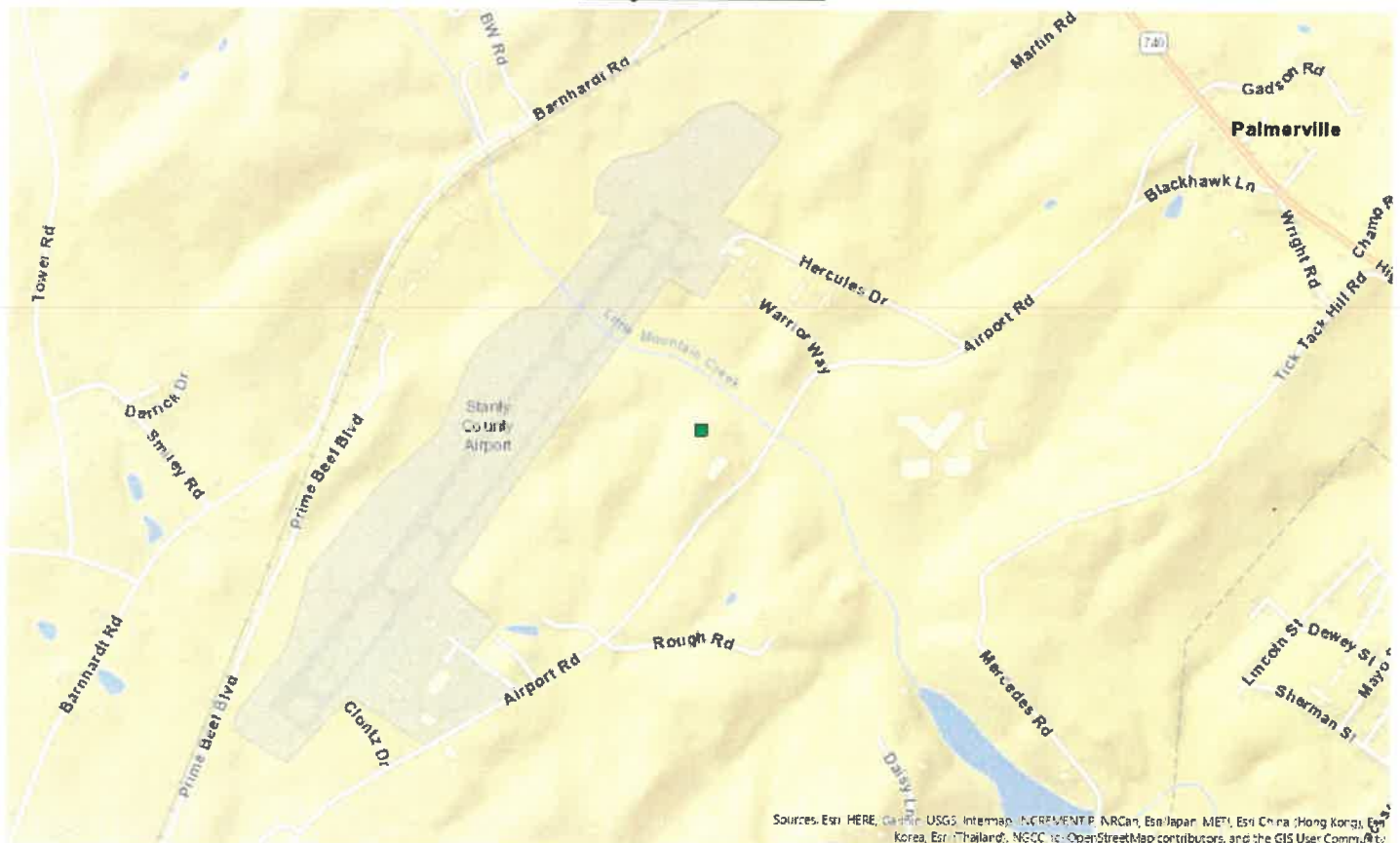
This project will expand and upgrade the existing land parcel which will increase the overall parcel worth in addition to preventing private interest or influence from disrupting airport planning.

Division(s): Division 10

County(s): Anson

MPO(s)/RPO(s): Rocky River RPO

Project Location



Sources: Esri, HERE, DeLorme, USGS, Intermap, INCREMENT P, NRCan, Esri Japan, METI, Esri China (Hong Kong), Swisstopo, Korea, Esri (Thailand), NGCC, Inc., OpenStreetMap contributors, and the GIS User Community



NCDOT Prioritization 7.0 Project Summary

SPOT ID: B192178

Mode: Bicycle & Pedestrian

Status: Submitted

US 52

From/Cross Street: NC 24/27

Specific Improvement Type: 7 - Protected Linear Pedestrian Facility (Pedestrian)

To: Snuggs Road

Project Category: Division Needs

Length: 2.4882809

TIP#:

Fully Funded in Draft STIP? No

Cost to NCDOT: \$2,936,000

Description:

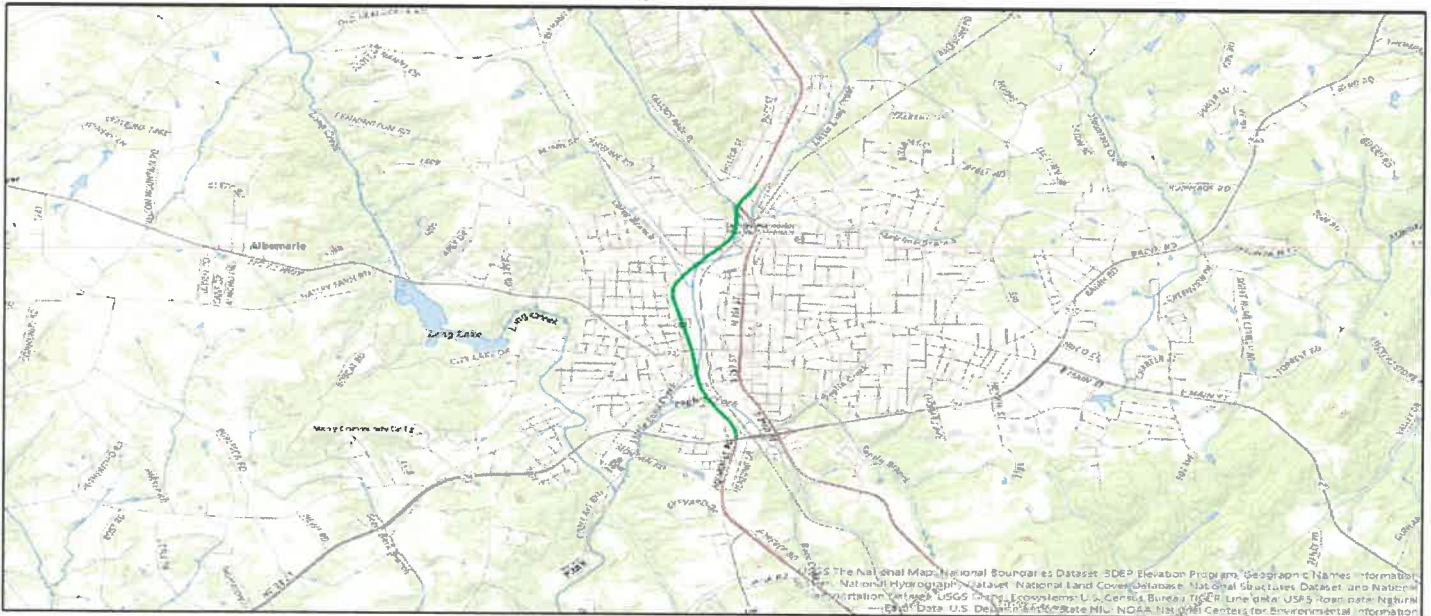
Build a sidewalk from NC 24/27 to Snuggs Road

Division(s): Division 10

County(s): Stanly

MPOS(s)/RPO(s): Rocky River RPO

Project Location





NCDOT Prioritization 7.0 Project Summary

SPOT ID: B192122

Mode: Bicycle & Pedestrian

Status: Submitted

NC 52 (Falcon Trail Greenway / MUP)

From/Cross Street: HWGY 49

Specific Improvement Type: 2 - Off-Road/Separated Linear Bicycle Facility (Bicycle)

To: East Gold Street

Project Category: Division Needs

Length: 3.67895189

TIP#:

Fully Funded in Draft STIP? No

Cost to NCDOT: \$9,686,000

Description:

Build Multi-Use greenway from Richfield Park to New London, NC

Division(s): Division 10

County(s): Stanly

MPOS(s)/RPO(s): Rocky River RPO

Project Location



Sources: Esri, HERE, DeLorme, USGS, Intermap, INCREMENT P, NRCan, Esri Japan, METI, Esri China (Hong Kong), Esri Korea, Esri (Thailand), NGCC, iPC, OpenStreetMap contributors, and the GIS User Community



NCDOT Prioritization 7.0 Project Summary

SPOT ID: B192185

Mode: Bicycle & Pedestrian

Status: Submitted

West Main Street

From/Cross Street: Stanly Community College / NC 24/27

Specific Improvement Type: 7 - Protected Linear Pedestrian Facility (Pedestrian)

To: Old Charlotte Road

Project Category: Division Needs

Length: 1.16137868

TIP#:

Fully Funded in Draft STIP? No

Cost to NCDOT: \$1,016,000

Description:

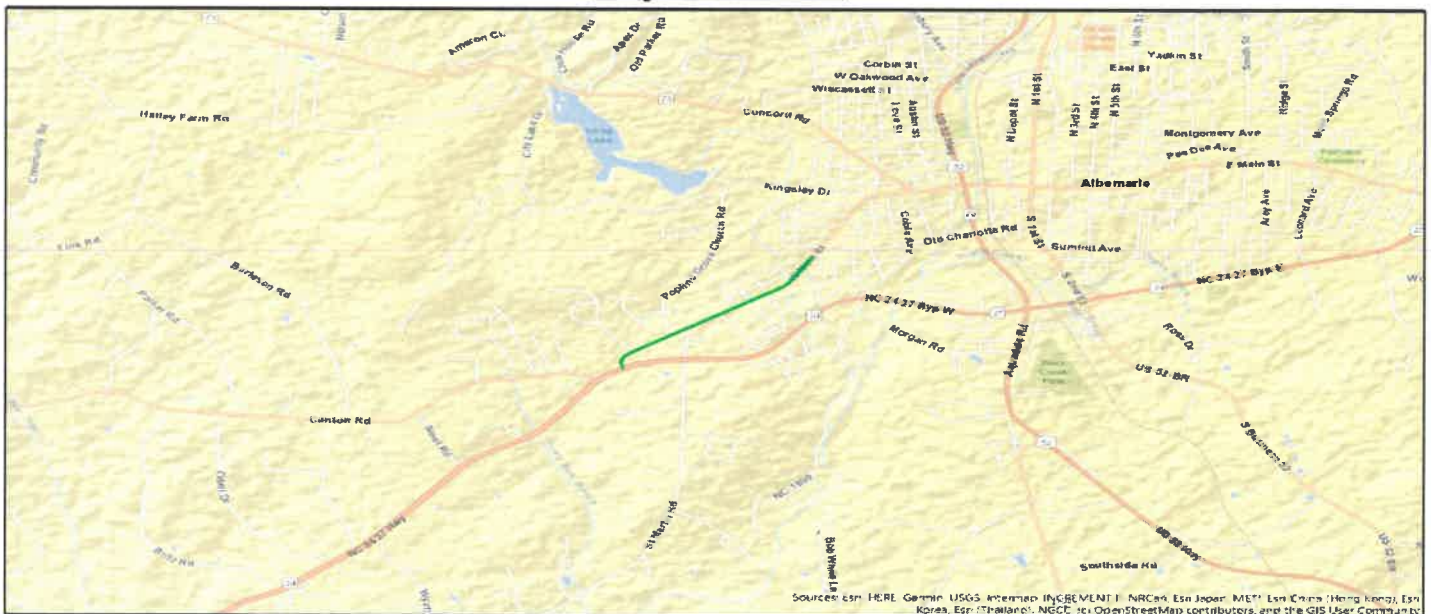
Build sidewalk from SCC to Old Charlotte Rd.

Division(s): Division 10

County(s): Stanly

MPOS(s)/RPO(s): Rocky River RPO

Project Location





NCDOT Prioritization 7.0 Project Summary

SPOT ID: B192295

Mode: Bicycle & Pedestrian

Status: Submitted

NC 200 / North Main Street

From/Cross Street: Big Lick Road / West Stanly St

Specific Improvement Type: 7 - Protected Linear Pedestrian Facility (Pedestrian)

To: Love Chapel Road

Project Category: Division Needs

Length: 0.30668413

TIP#:

Fully Funded in Draft STIP? No

Cost to NCDOT: \$291,000

Description:

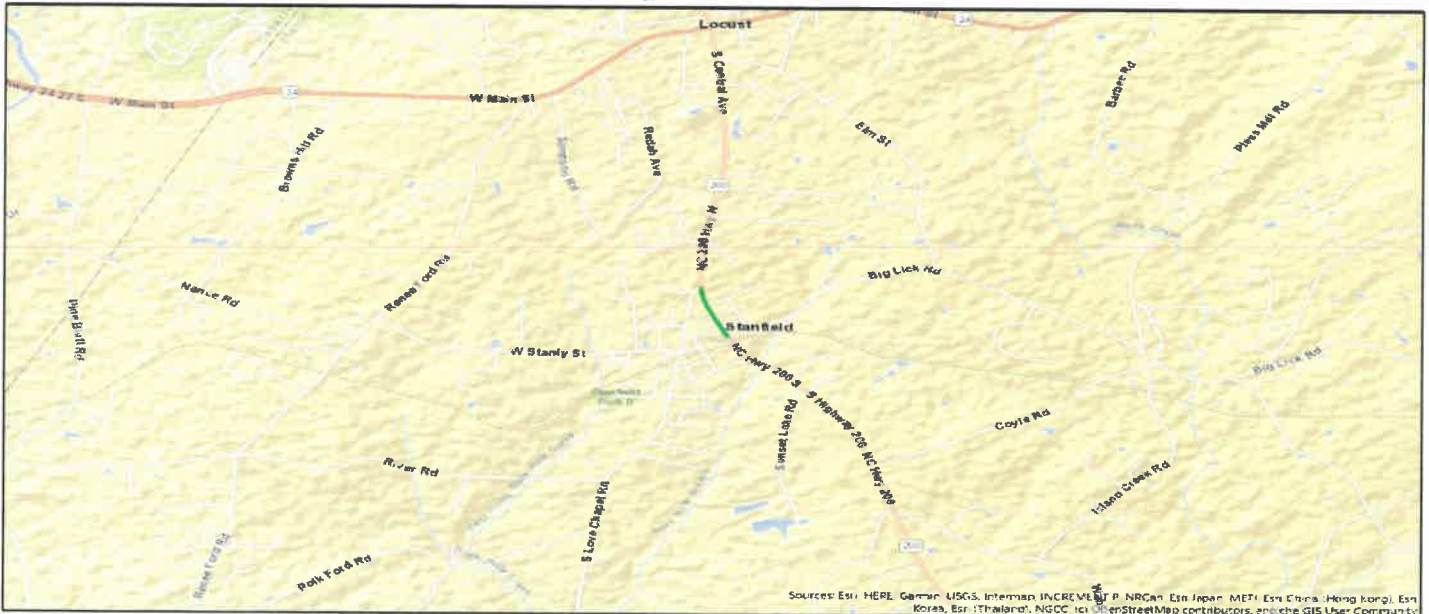
Construct new sidewalk facility

Division(s): Division 10

County(s): Stanly

MPOS/RPO(s): Rocky River RPO

Project Location





NCDOT Prioritization 7.0 Project Summary

SPOT ID: B193005

Mode: Bicycle & Pedestrian

Status: Submitted

Park Ridge Road

From/Cross Street: North 2nd Street

Specific Improvement Type: 7 - Protected Linear Pedestrian Facility (Pedestrian)

To: Park Road

Project Category: Division Needs

Length: 0.47656095

TIP#:

Fully Funded in Draft STIP? No

Cost to NCDOT: \$479,000

Description:

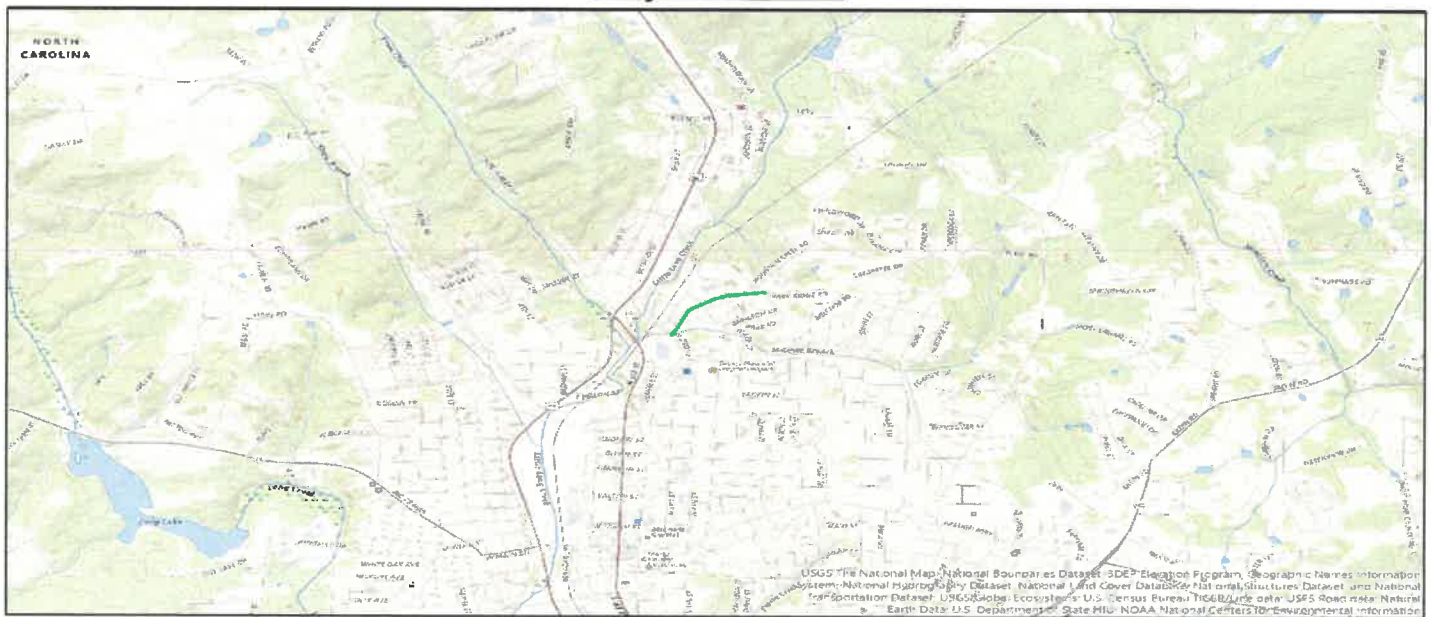
Construct an off road sidewalk on Park Ridge Road from 2nd Street to Park Road (end)

Division(s): Division 10

County(s): Stanly

MPOS(s)/RPO(s): Rocky River RPO

Project Location





NCDOT Prioritization 7.0 Project Summary

SPOT ID: B150478

Mode: Bicycle & Pedestrian

Status: Submitted

Hwy 52 Business Ramp

From/Cross Street: 2nd street

Specific Improvement Type: 7 - Protected Linear Pedestrian Facility (Pedestrian)

To: Hwy 24-27

Project Category: Division Needs

Length: 0.12128327

TIP#: EB-5974

Fully Funded in Draft STIP? No

Cost to NCDOT: \$359,000

Description:

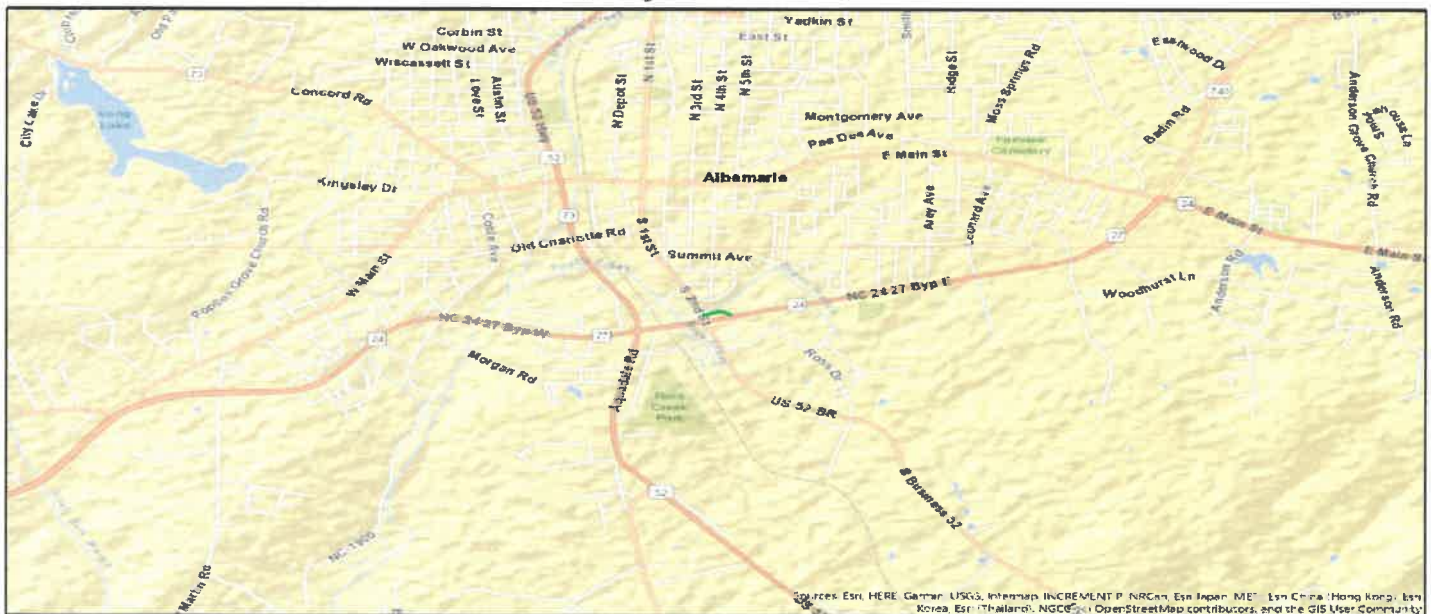
Construct a sidewalk or pedestrian path on the Ramp or adjacent to it.

Division(s): Division 10

County(s): Stanly

MPOS(s)/RPO(s): Rocky River RPO

Project Location





NCDOT Prioritization 7.0 Project Summary

SPOT ID: B192145

Mode: Bicycle & Pedestrian

Status: Submitted

NC 740

From/Cross Street: Natahala Drive

Specific Improvement Type: 7 - Protected Linear Pedestrian Facility (Pedestrian)

To: Badin Public Access

Project Category: Division Needs

Length: 0.85479709

TIP#:

Fully Funded in Draft STIP? No

Cost to NCDOT: \$847,000

Description:

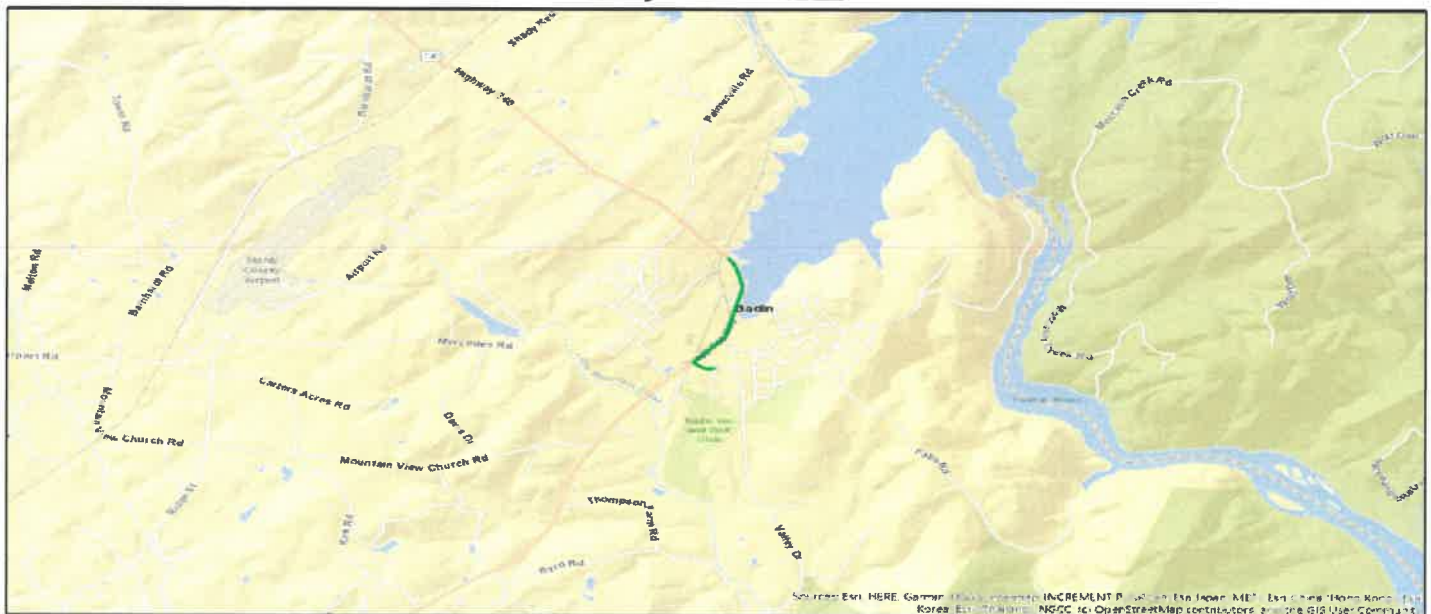
Construct Sidewalk from Badin residential area to Badin Lake

Division(s): Division 10

County(s): Stanly

MPOS(s)/RPO(s): Rocky River RPO

Project Location





NCDOT Prioritization 7.0 Project Summary

SPOT ID: B192138

Mode: Bicycle & Pedestrian

Status: Submitted

NC 200 / South Central Avenue

From/Cross Street: Carmel Drive

Specific Improvement Type: 7 - Protected Linear Pedestrian Facility (Pedestrian)

To: Main Street

Project Category: Division Needs

Length: 0.62245542

TIP#:

Fully Funded in Draft STIP? No

Cost to NCDOT: \$677,000

Description:

Construct new sidewalk facility

Division(s): Division 10

County(s): Stanly

MPOS(s)/RPO(s): Rocky River RPO

Project Location





NCDOT Prioritization 7.0 Project Summary

SPOT ID: B190527

Mode: Bicycle & Pedestrian

Status: Submitted

US 52

From/Cross Street: South of Holt Road

Specific Improvement Type: 7 - Protected Linear Pedestrian Facility (Pedestrian)

To: NC 49

Project Category: Division Needs

Length: 0.74027013

TIP#:

Fully Funded in Draft STIP? No

Cost to NCDOT: \$887,000

Description:

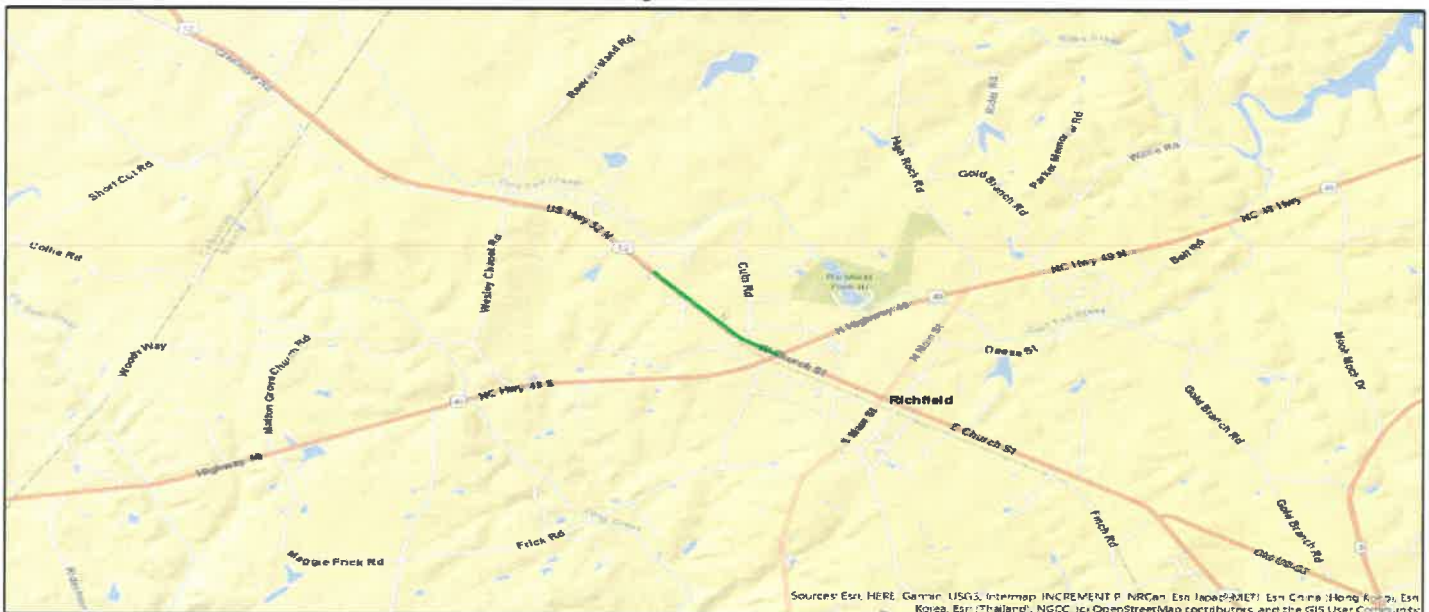
Continuation of existing sidewalk which currently stops just South of Holt Rd to provide connectivity to Ritchfield, NC & terminate at NC Hgwy 49.

Division(s): Division 10

County(s): Stanly

MPOS(s)/RPO(s): Rocky River RPO

Project Location





NCDOT Prioritization 7.0 Project Summary

SPOT ID: B192117

Mode: Bicycle & Pedestrian

Status: Submitted

West Passic Road (SR 1403)

From/Cross Street: Boston Avenue

Specific Improvement Type: 7 - Protected Linear Pedestrian Facility (Pedestrian)

To: Peach Tree Lane

Project Category: Division Needs

Length: 0.36202499

TIP#:

Fully Funded in Draft STIP? No

Cost to NCDOT: \$307,000

Description:

Sidewalk Improvements & Connect Sections

Division(s): Division 10

County(s): Anson

MPOS(s)/RPO(s): Rocky River RPO

Project Location





NCDOT Prioritization 7.0 Project Summary

SPOT ID: B191541

Mode: Bicycle & Pedestrian

Status: Submitted

Allentown Road

From/Cross Street: Ray Lee Road

Specific Improvement Type: 7 - Protected Linear Pedestrian Facility (Pedestrian)

To: Lake Tillary

Project Category: Division Needs

Length: 1.0878354

TIP#:

Fully Funded in Draft STIP? No

Cost to NCDOT: \$1,095,000

Description:

Sidewalk Construction

Division(s): Division 10

County(s): Stanly

MPOS(s)/RPO(s): Rocky River RPO

Project Location





NCDOT Prioritization 7.0 Project Summary - Mobility

SPOT ID: H191793

Mode: Highway

Status: Submitted

SR-1625 (East Main Street)

From/Cross Street: 4th Street

Specific Improvement Type: 10 - Improve Intersection

To:

Project Category: Division Needs

Length: 0.5

TIP#:

Fully Funded in Draft STIP? No

Cost to NCDOT: \$10,849,000

Description:

Intersection Improvements

Division(s): Division 10

County(s): Stanly

MPOS(s)/RPO(s): Rocky River RPO

Project Location



SR-1625 (East Main Street)

SPOT ID: H191793



NCDOT Prioritization 7.0 Project Summary - Modernization

SPOT ID: H191955

Mode: Highway

Status: Submitted

SR-1645 (East Main Street)

From/Cross Street: Pee Dee Avenue

Specific Improvement Type: 16 - Modernize Roadway

To: Parkway Drive

Project Category: Division Needs

Length: 0.67

TIP#:

Fully Funded in Draft STIP? No

Cost to NCDOT: \$6,523,000

Description:

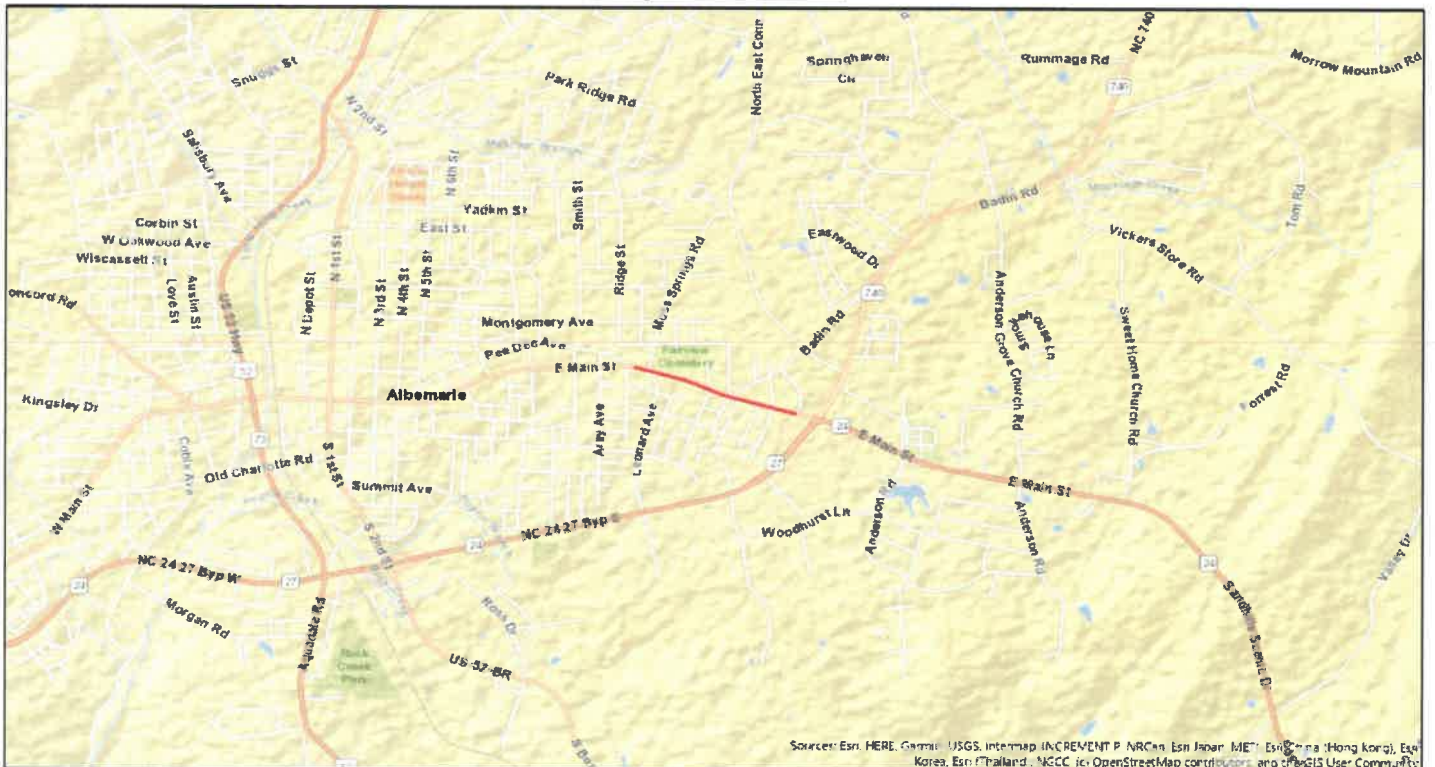
Address street function; drainage infrastructure & surfacing

Division(s): Division 10

County(s): Stanly

MPOS(s)/RPO(s): Rocky River RPO

Project Location



Source: Esri, HERE, DeLorme, USGS, Intermap, INCREMENT P, NRCan, Esri Japan, METI, Esri China (Hong Kong), Swisstopo, Swisstopo, Swisstopo, Korea, Esri (Thailand), NAVTEQ, and OpenStreetMap contributors, and the GIS User Community

SR-1645 (East Main Street)

SPOT ID: H191955



NCDOT Prioritization 7.0 Project Summary - Mobility

SPOT ID: H191963

Mode: Highway

Status: Submitted

SR-1783 (New Route)

From/Cross Street: US 52 BUS South

Specific Improvement Type: 5 - Construct Roadway on New Location

To: SR 1783 (Henson Street)

Project Category: Division Needs

Length: 0.91

TIP#:

Fully Funded in Draft STIP? No

Cost to NCDOT: \$14,140,000

Description:

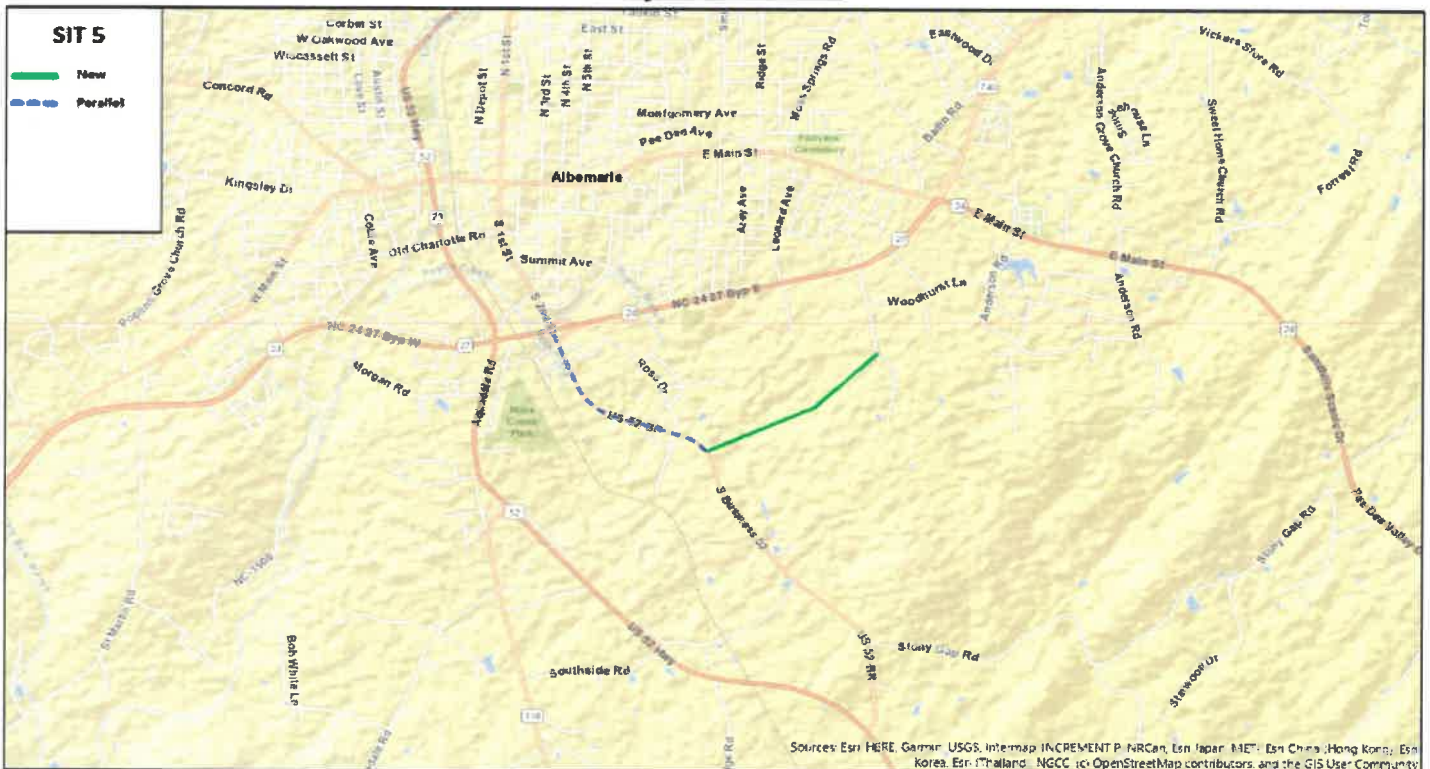
Construct Roadway on new location.

Division(s): Division 10

County(s): Stanly

MPOS(s)/RPO(s): Rocky River RPO

Project Location



SR-1783 (New Route)

SPOT ID: H191963



NCDOT Prioritization 7.0 Project Summary - Modernization

SPOT ID: H191966

Mode: Highway

Status: Submitted

SR-1137 (Elm Street)

From/Cross Street: NC 200

Specific Improvement Type: 16 - Modernize Roadway

To: Big Lick Road

Project Category: Division Needs

Length: 1.63

TIP#:

Fully Funded in Draft STIP? No

Cost to NCDOT: \$14,241,000

Description:

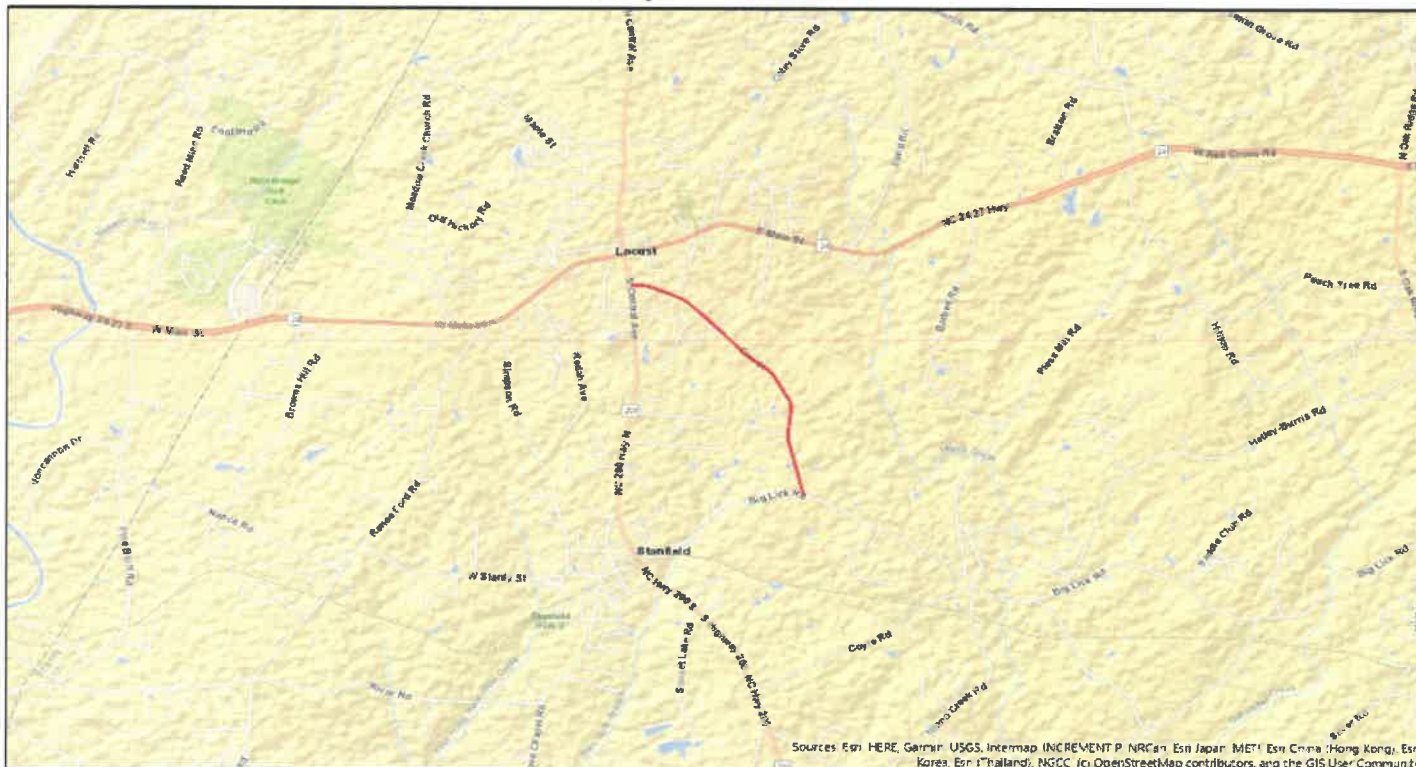
Modernize Roadway

Division(s): Division 10

County(s): Stanly

MPOS(s)/RPO(s): Rocky River RPO

Project Location



SR-1137 (Elm Street)

SPOT ID: H191966



NCDOT Prioritization 7.0 Project Summary - Modernization

SPOT ID: H191218

Mode: Highway

Status: Submitted

SR-1719 (Falls Road)

From/Cross Street: NC 740

Specific Improvement Type: 16 - Modernize Roadway

To: Stanly Street

Project Category: Division Needs

Length: 0.58

TIP#:

Fully Funded in Draft STIP? No

Cost to NCDOT: \$9,488,000

Description:

Modernize Roadway

Division(s): Division 10

County(s): Stanly

MPOS(s)/RPO(s): Rocky River RPO

Project Location



SR-1719 (Falls Road)

SPOT ID: H191218



NCDOT Prioritization 7.0 Project Summary

SPOT ID: R171284

Mode: Rail

Status: Submitted

CSX SF Line

Location: The intersection of Cowan & Railroad Streets just north of the Railroad tracks.

Specific Improvement Type: 3 - Highway-rail crossing improvement (point)

Project Category:

TIP #:

Fully Funded in Draft STIP? No

Cost to NCDOT: \$3

Description:

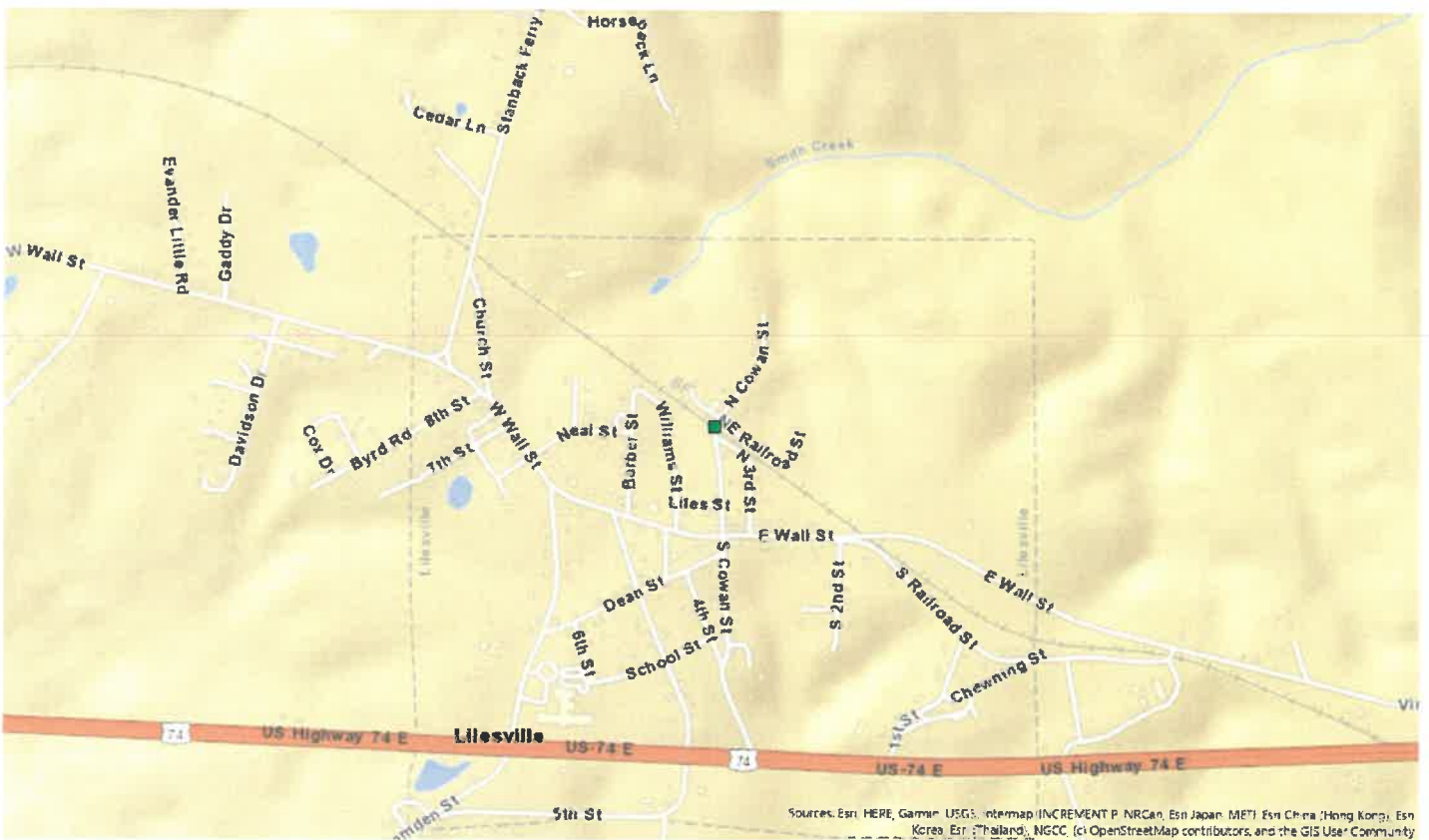
Construct the extension of Railroad Street to SR 1703 (Ninth Street/ Stanback Ferry Rd) to provide continuous vehicular access from N. Cowan St. and close the Cowan Street at-grade crossing (Crossing # 631 747U) in Lilesville.

Division(s) : Division 10

County(s) : Anson

MPO(s)/RPO(s) : Rocky River RPO

Project Location



ROCKY RIVER RPO - SPOT P7 - SORTED BY QUANTITATIVE SCORE - DIVISION NEEDS

SPOT ID	MODE		DESCRIPTION	RRPO	RPO Points Applied	Cascade (Y/N)	Division Needs Quantitative Score (out of 50)
					(TBD)		
A231125	Aviation	Anson	VUJ - Stanly Co. Airport: Rwy 4R and 4L Land Acquisition & Obstruction Removal	Rocky River RPO		N	42.35
A231129	Aviation	Anson	VUJ - Stanly Co. Airport: Stanly County Hangar Construction	Rocky River RPO		N	23.41
A190517	Aviation	Stanly	AFP - Anson Co. Airport: Airport Perimeter Fencing & Land Acquisition	Rocky River RPO		N	18.39
A172262	Aviation	Stanly	AFP - Anson Co. Airport: Apron Expansion, AWOS Relocation, and Fuel Farm	Rocky River RPO		N	8.50
B192178	Bicycle & Pedestrian	Stanly	US 52 From NC 24/27 to Snuggs Rd. - Construct sidewalk	Rocky River RPO		N	33.35
B192122	Bicycle & Pedestrian	Stanly	NC 52 Falcon Trail Greenway From HWY 49 to East Gold St. - Build Multi-Use greenway from Richfield Park to New London, NC	Rocky River RPO		N	23.77
B192185	Bicycle & Pedestrian	Stanly	West Main St. - Construct a sidewalk from Stanly Community College to Old Charlotte Rd.	Rocky River RPO		N	21.14
B192295	Bicycle & Pedestrian	Stanly	NC 200 / N. Main St. From Big Lick Rd / W. Stanly St. to Love Chapel Rd. - Construct new sidewalk facility	Rocky River RPO		N	20.10
B193005	Bicycle & Pedestrian	Stanly	Park Ridge Rd. From N. 2nd St. to Park Rd. - Construct sidewalk	Rocky River RPO		N	18.57
B150478	Bicycle & Pedestrian	Stanly	HWY 52 from 2nd St. to HWY 24-27 - Construct a sidewalk or pedestrian path on the Ramp or adjacent to it.	Rocky River RPO		N	16.20
B192145	Bicycle & Pedestrian	Stanly	NC 740 From Natahala Dr. to Badin Lake - Construct Sidewalk from Badin residential area to public lake access.	Rocky River RPO		N	12.15
B192138	Bicycle & Pedestrian	Stanly	NC 200 / S. Central Ave. From Carmel Dr. to Main St. - Construct new sidewalk facility	Rocky River RPO		N	11.29
B190527	Bicycle & Pedestrian	Stanly	US 52 From South of Holt Rd. to NC 49 - Continuation of existing sidewalk which currently stops just South of Holt Rd to provide connectivity to Ritchfield, NC & terminate at NC Hgwy 49.	Rocky River RPO		N	10.13
B192117	Bicycle & Pedestrian	Anson	SR 1403 (W. Passic Rd.) From Boston Ave. to Peach Tree Ln. - Sidewalk Improvements & Connect Sections	Rocky River RPO		N	9.84
B191541	Bicycle & Pedestrian	Stanly	Allentown Rd. From Ray Lee Rd. to Lake Tillery - Construct Sidewalk	Rocky River RPO		N	8.68
H191793	Highway	Stanly	SR 1625 (East Main Street) to 4th St. - Intersection Improvements	Rocky River RPO		N	28.02
H191955	Highway	Stanly	SR 1625 (East Main Street) From PeeDee Avenue to Parkway Dr. - Address street function; Drainage Infrastructure & Surfacing	Rocky River RPO		N	23.17
H191963	Highway	Stanly	US 52 Business S. to SR 1783 (Henson St.)-Construct New Roadway	Rocky River RPO		Y	21.30
H191966	Highway	Stanly	SR 1137 (Elm St.) From NC 200 to Big Lick Rd. - Modernize Roadway	Rocky River RPO		N	15.75
H191218	Highway	Stanly	SR 1719 (Falls Road) From NC 740 to Stanly St. - Modernize Roadway	Rocky River RPO		N	12.17
R171284	Rail	Anson	SR 1703 (Ninth St/Stanback Ferry Rd) in Anson County - Provide Vehicular Access	Rocky River RPO		Y	18.81